



# UKEFARM

## CHORDETTE

Chordette is a chord library app that can be used as a stand-alone application, or in conjunction with a word processing program, such as Word, Pages, Bean, etc. As a stand-alone, it provides a handy interface for looking at chords in first and second position on the fretboard. When used with a word processing program, chord charts can be built by using the keystroke information for entering the chords, or using the Copy button to paste chords into the document.

This document covers all versions of Chordette. There are six different apps supporting the following tunings and instruments:

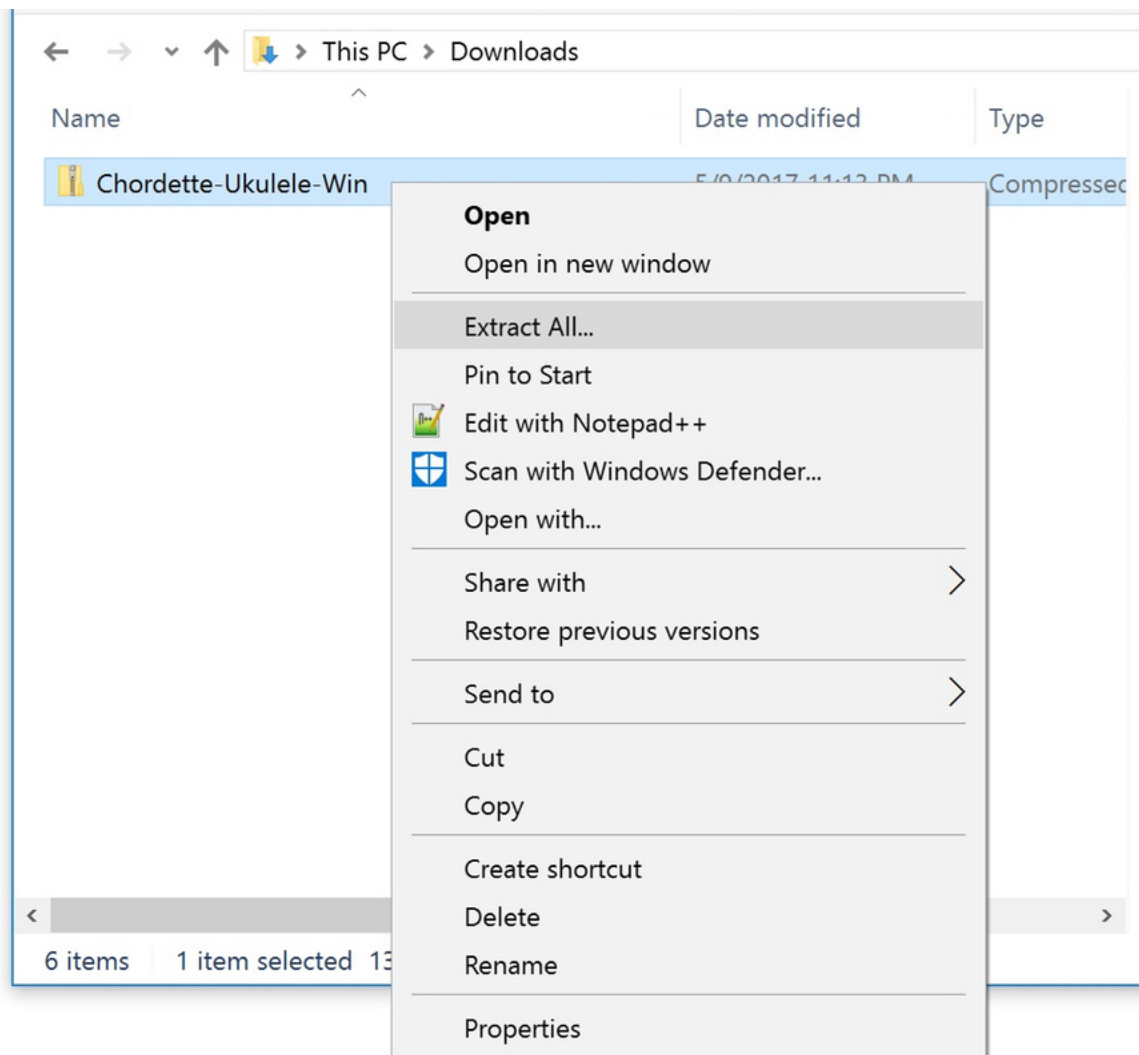
	Tuning	Instrument
	A D F# B	Soprano, Concert Ukulele
	G C E A	Soprano, Concert, Tenor Ukulele
	D G B E	Baritone Ukulele, Tenor Guitar
	G D A E	Mandolin, Irish Tenor Banjo
	C G D A	Mandola, Tenor Guitar, Tenor Banjo
	E A D G B E	Guitar



# UKEFARM

## INSTALLATION for WINDOWS

Chordette for Windows is distributed as a zip file named Chordette-[Instrument]-Win. After you download the zip file, right-click on the file and select Extract All...





# UKEFARM

You will be asked to select a destination for the files.

←  Extract Compressed (Zipped) Folders

## Select a Destination and Extract Files





Files will be extracted to this folder:

C:\Users\Directory\Downloads\Chordette-Ukulele-Win

Browse...

☒ Show extracted files when complete

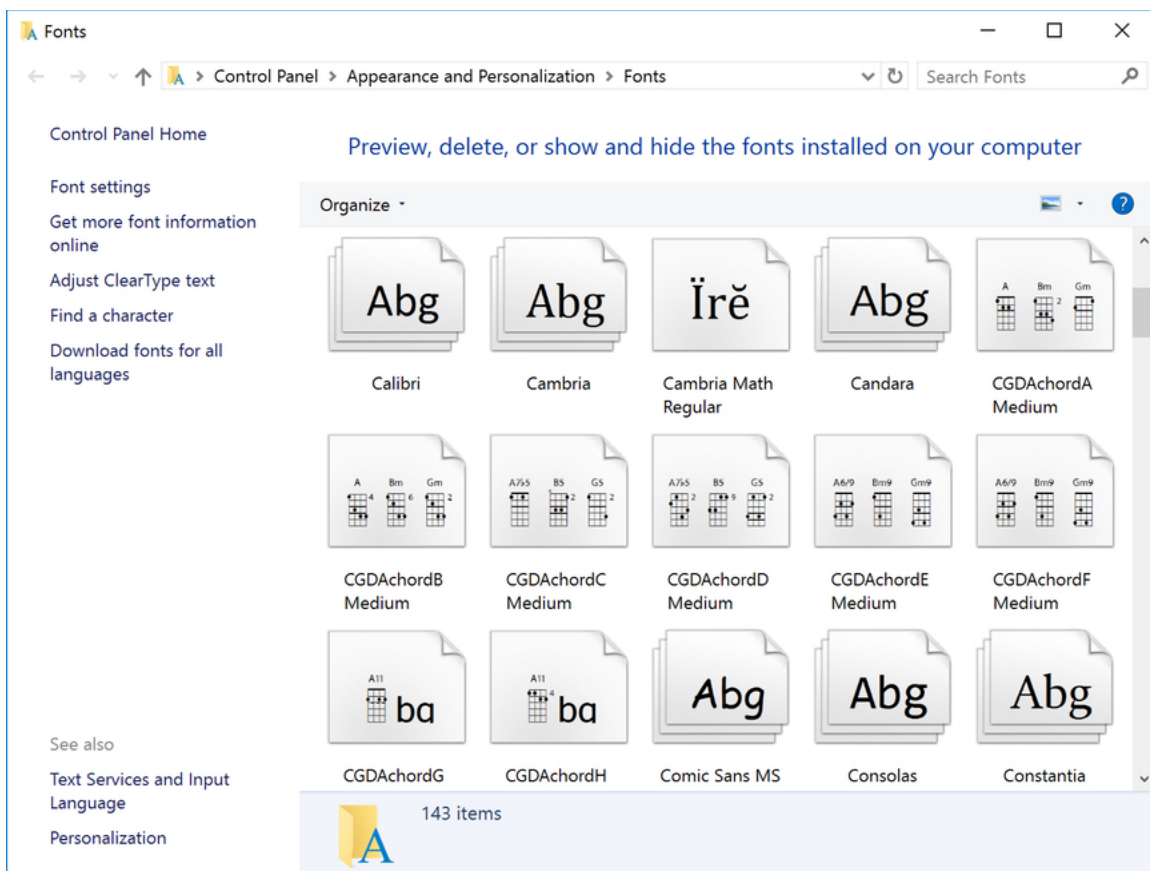
The zip file will be extracted to the destination you chose. There will be a folder named Chordette-[Instrument]-Win. Open the folder to view the contents.

← → ▾ ↑  > This PC > Documents > Chordette-Ukulele-Win >		
Name	Date modified	Type
 Chordette-GCEA-Fonts	5/9/2017 11:54 PM	File folder
 Chordette-Ukulele	5/9/2017 11:54 PM	File folder
 Chordette-ReadMe	5/9/2017 11:54 PM	PDF File



# UKEFARM

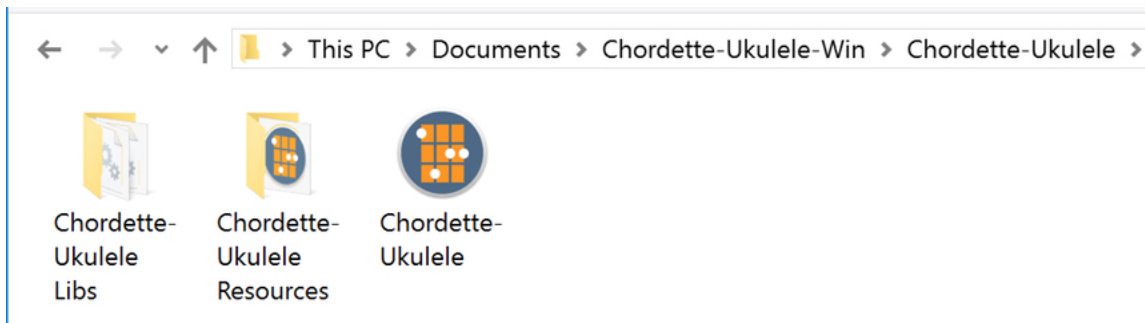
The next step is to install the custom fonts. Chordette requires eight custom chord fonts, which are included with the application. It is important to install the fonts before opening the Chordette app, or else you will just see alphanumeric characters displayed rather than the chords. Open the Chordette-[Tuning]-Fonts folder. In Windows 10, access the font control panel. Click in Windows 10's Search field (located just to the right of the Start button), type "fonts," then click the item that appears at the top of the results: Fonts - Control panel. Drag each custom chord font to the main window. When you drop the font, you'll see a brief "installing font" message. If you are using an older Windows version and need help, google font installation for your operating system version.



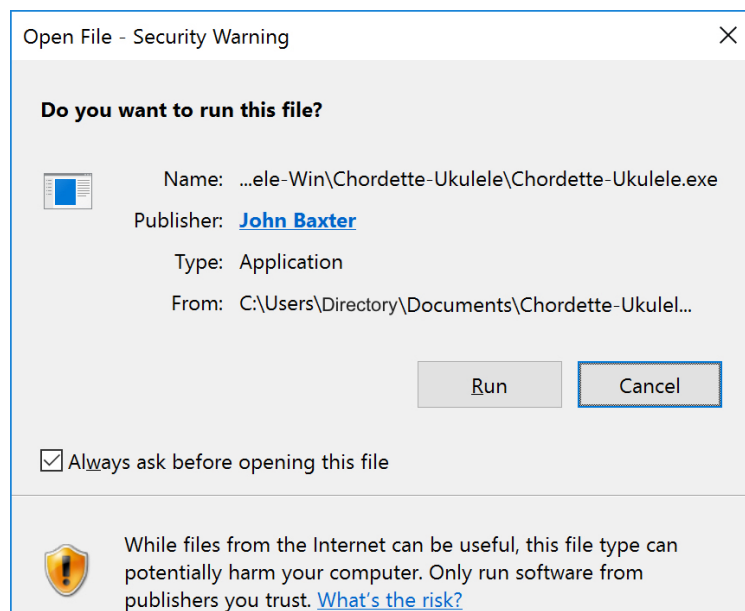


# UKEFARM

The Chordette-[Instrument] folder contains the Chordette app and two additional folders. This folder can be located where you choose. It does not need to be in your Applications folder, but you must keep the Chordette app inside the Chordette-[Instrument] folder with the other two folders.

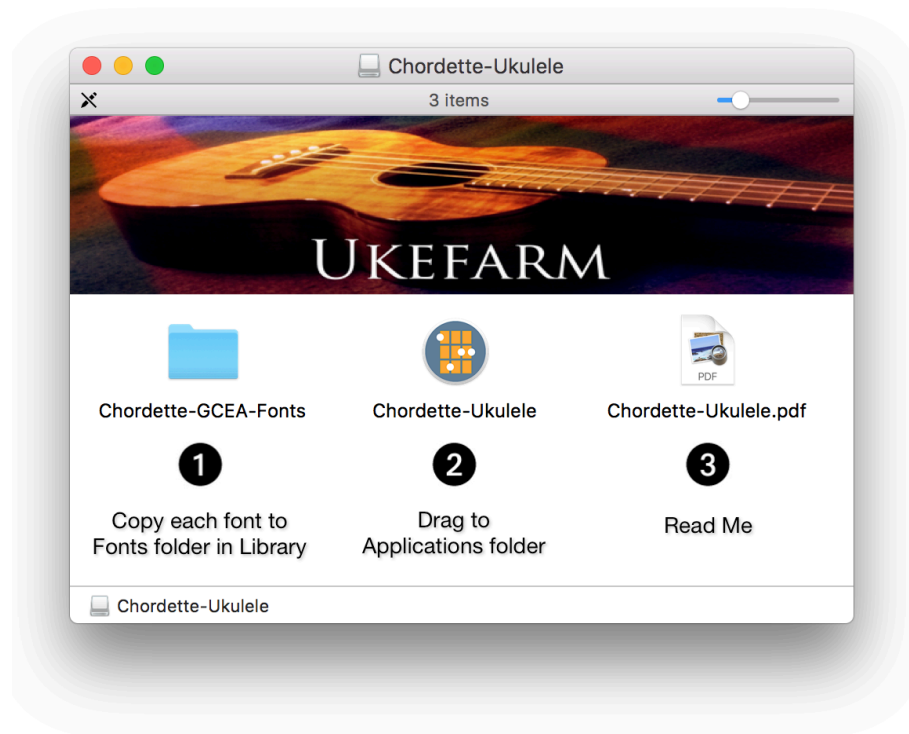


The first time you run the app you will get a run file dialog. Chordette has been code signed to ensure that the app has not been tampered with. Any modifications to the app will invalidate the code signature and alert you that the publisher is unknown. It is recommended that you retain the zip file as a backup.



## INSTALLATION for macOS

Chordette for macOS is distributed as a dmg file named Chordette-[Instrument]-Mac. The dmg file contains the following components:



Double click the dmg file. Chordette for requires eight custom chord fonts, which are included with the application. It is important to install the fonts before opening the Chordette app, or else you will just see alphanumeric characters displayed rather than the chords. On your main drive, open the Library folder, and then open the fonts folder. Copy and Paste the fonts into the Fonts folder. It is recommended that you retain the dmg file as a backup.

The Chordette app can be located anywhere you choose. It does not need to be in the Applications folder.



# UKEFARM

## CHORD GROUPS (Ukulele font used for example)

The chords are

A   A alt   B   B alt   C   C alt   D   D alt

### Group A

GCEAChordA - first position chords

### Group B

GCEAChordC - first position chords

### Group C

GCEAChordE - first position chords

### Group D

GCEAChordG - first position chords

### Group A alt

GCEAChordB - second position chords

### Group B alt

GCEAChordD - second position chords

### Group C alt

GCEAChordF - second position chords

### Group D alt

GCEAChordH - second position chords

Group A		Group B		Group C		Group D	
A	A alt	B	B alt	C	C alt	D	D alt
GCEAChordA	GCEAChordB	GCEAChordC	GCEAChordD	GCEAChordE	GCEAChordF	GCEAChordG	GCEAChordH
1st Pos	2nd Pos	1st Pos	2nd Pos	1st Pos	2nd Pos	1st Pos	2nd Pos
maj	maj	6/9	6/9	sus2	sus2	11	11
7	7	dim7	dim7	sus4	sus4	m11	m11
min	min	aug (+)	aug (+)	7sus4	7sus4	13	13
m7	m7	7b5	7b5	9	9	Blank	Blank
maj7	maj7	m7b5	m7b5	m9	m9		
5	5	7#5	7#5	maj9	maj9		
6	6	7b9	7b9	(add9)	(add9)		
m6	m6	7#9	7#9	m (add9)	m (add9)		
Blank	Blank	Blank	Blank	Blank	Blank		



# UKEFARM

## USING CHORDETTE

The easy way to enter chords is to use the Copy Chord button.

## COPY CHORD BUTTON

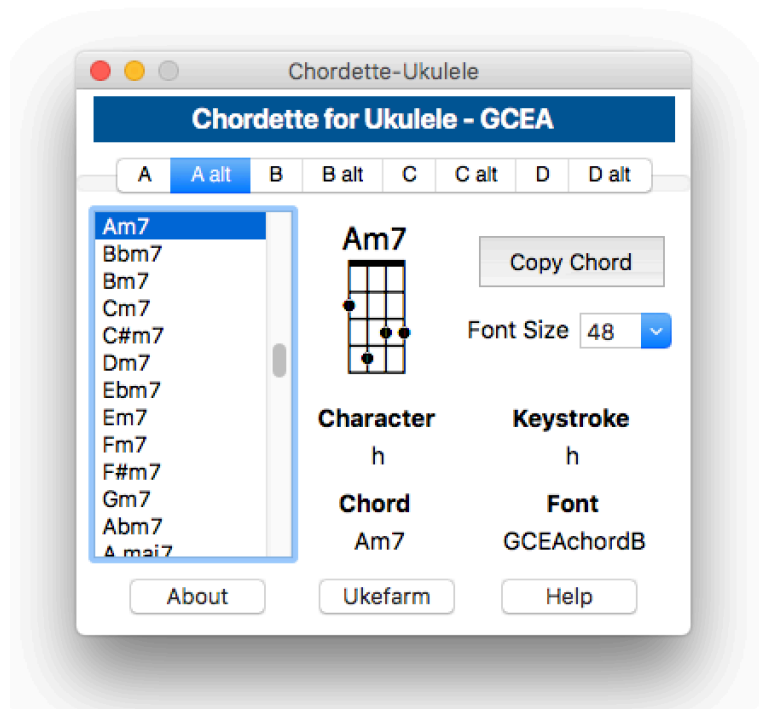
When entering chords using the Copy Chord button, place your cursor where you want the chord to be inserted.

## FONT SIZE

Select the font size from either the drop down menu below the Copy Chord button, or enter a specific size. After clicking on the Copy Chord button, either select paste from your app menu, or use your computer keyboard shortcut.

Macintosh - Command + v

Windows - Ctrl + v







# UKEFARM

## KEYBOARD CHORD ENTRY

1. Open a word processing app.
2. Select the font in the word processing app that relates to the desired chord (i.e., if the chord is under Chord Group B, select the font displayed under the Font label, for ukulele, GCEAChordC will be displayed).

**NOTE:** Some versions of word processors display the chord name in the style of the font. This will result in the font names being shown as a string of chords. You may not be able to disable this feature. If so, look for a menu item that provides an alternative view for fonts.

3. Select the desired font size in the word processing app.
4. Type the keystroke that is displayed in Chordette for Ukulele for the desired chord. For example, "A" will enter an A chord for Group A chords. Typing "Q" will enter a Cmaj7 chord. For chords that use the alt key, do the following:

Press the alt key (also labeled as "Option" on Macintosh) and type the number or letter for the chord. For example using GCEAChordA:

Macintosh - Pressing the option key and typing "3" will display the Bb5 chord.

Windows - Pressing the alt key and typing "0163" will display the Bb5 chord.